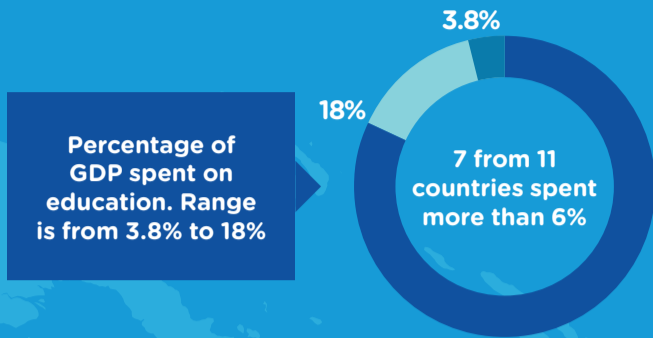
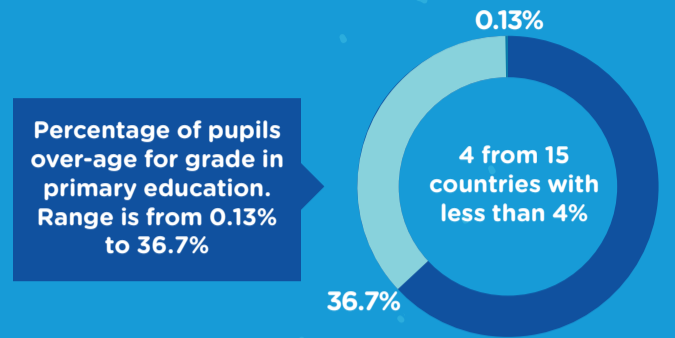
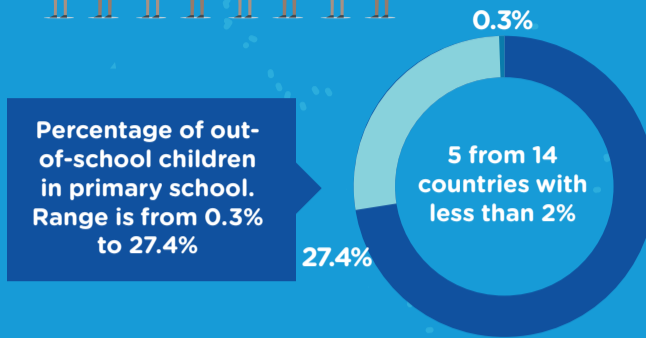
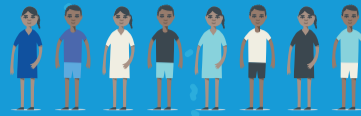


THE STATUS OF EDUCATION IN THE PACIFIC REGIONAL

GDP IS ONLY ONE INDICATOR OF EDUCATION QUALITY AND RELEVANCE. WHAT OTHER INDICATORS ARE AVAILABLE?



THE PROPORTION OF OUT-OF-SCHOOL CHILDREN AND OVER-AGE CHILDREN IS A MEASURE OF QUALITY AND RELEVANCE.

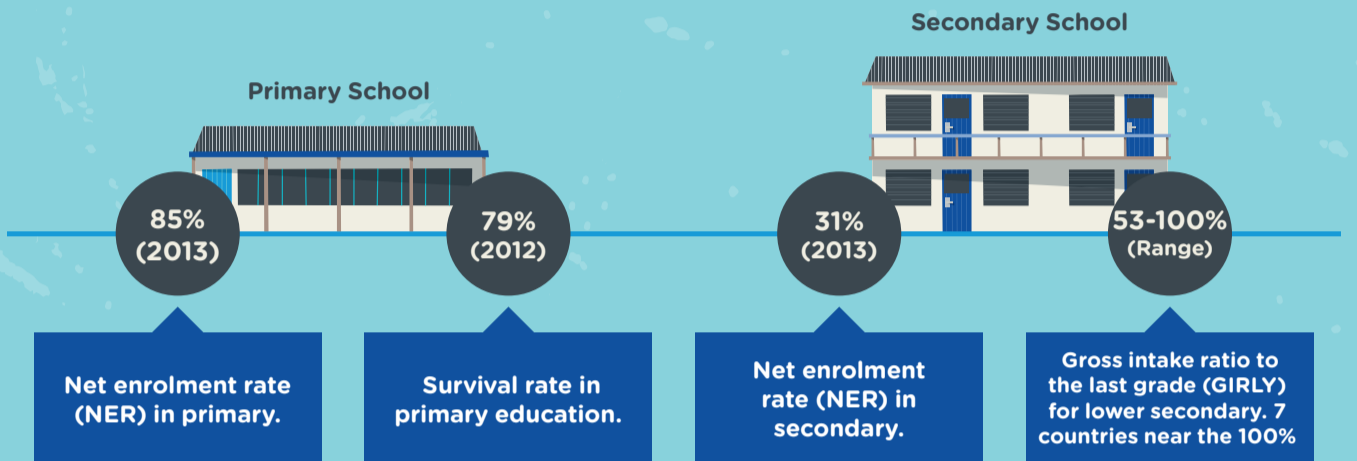


ARE STUDENTS BEING SUPPORTED TO ACHIEVE THE EXPECTED LEARNING OUTCOMES?

Across the region, 10/15 countries saw an increase in Y6 numeracy levels from 2012 to 2015. However, literacy levels improved in only 6/15 countries.



PERCENTAGE OF ENROLMENTS



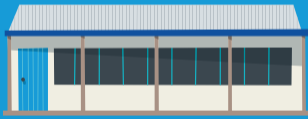
Gross enrolment rate (GER) in early childhood education.

81%



Gross enrolment rate (GER) in primary.

112%



TRANSITION RATE BETWEEN PRIMARY AND SECONDARY EDUCATION

61-98% (Range)



GROSS ENROLMENT RATE

Girls



Boys



72%

Early Childhood

73%

110%

Primary

119%

72%

Secondary

82%

HOW DO YOUR STUDENTS PROGRESS THROUGH THE LEARNING PATHWAY?

8/10 students in 11/15 countries transition from primary to secondary school.



PARTICIPATION RATE IN TECHNICAL-VOCATIONAL EDUCATION PROGRAMMES (15 TO 24-YEAR OLDS)

1-16.4% (Range, 7 countries)



PUPIL TEACHER RATIO



Primary

36.6

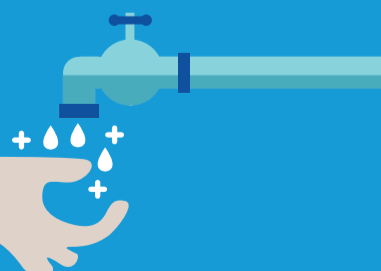
Range: 8-40

Secondary

24.5

Range: 8-31

WATER AND SANITATION



28-100% (Range)

Schools with safe drinking water. 6 from 12 countries with 100%

TEACHER QUALIFICATIONS

